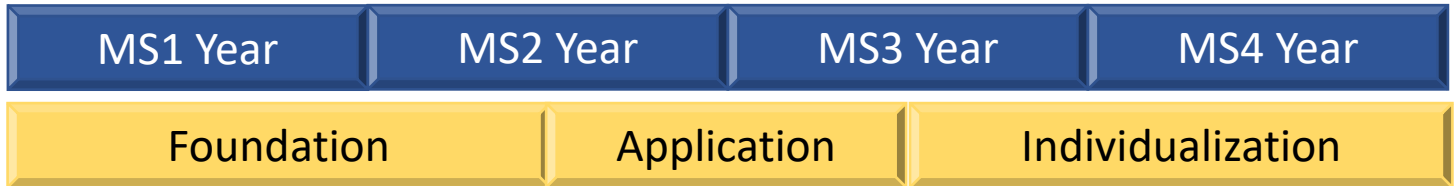


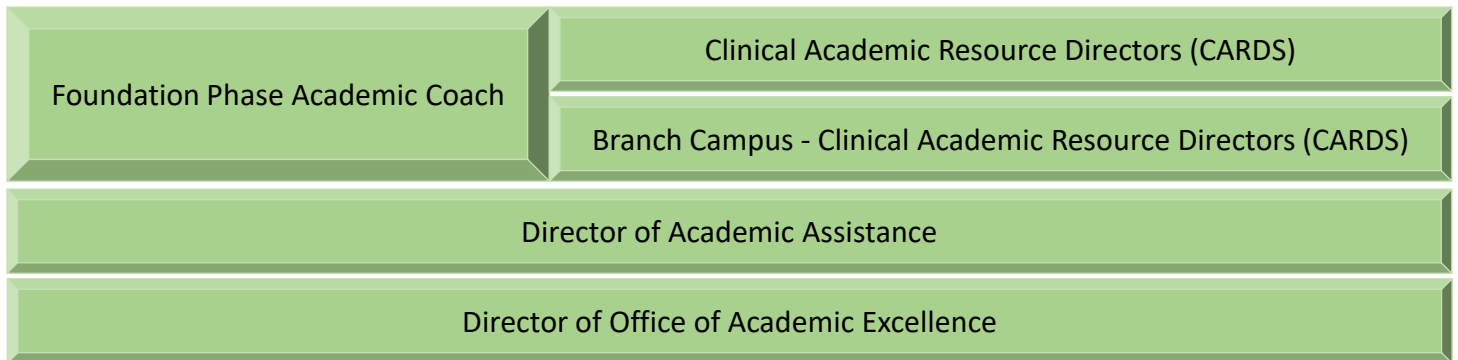


Faculty Guide to Student Support Services

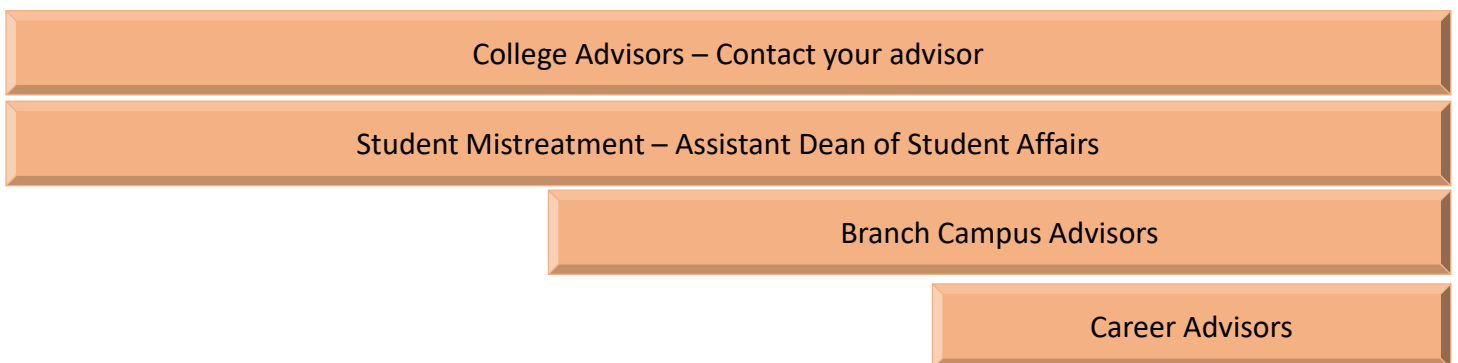
What to do when your student needs help



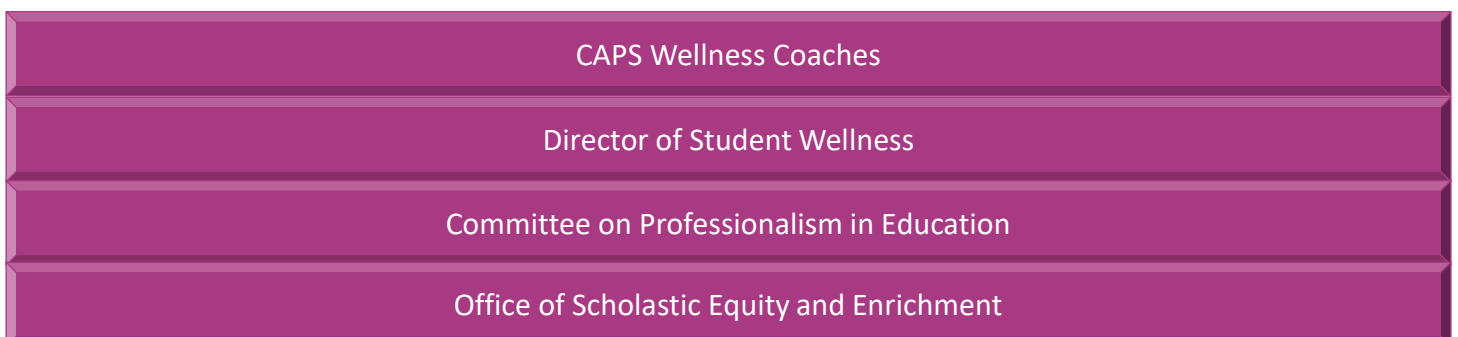
Office of Academic Excellence – Academic Coaching and Support



Office for Student Affairs – Personal and Career Support/Advising



Wellness, Mental Health, and Other Resources





Faculty Guide to Student Support Services

What to do when your student needs help

☎ 919-962-8207
 ✉ oae@med.unc.edu
 🌐 med.unc.edu/md/academicexcellence

Office of Academic Excellence

 <p>Christina Shenvi, MD, PhD, MBA Director of Office of Academic Excellence</p>	 <p>Kunal Patel, MD Foundation Phase Academic Coach</p>	 <p>Debbie Ingersoll, PhD Director of Academic Assistance</p>
 <p>Kelly Lacy Smith, MD Clinical Academic Resource Director</p>	 <p>Kim Nichols, MD Clinical Academic Resource Director</p>	 <p>Animesh Jain, MD Clinical Academic Resource Director</p>
 <p>Kristin Chally, MD Clinical Academic Resource Director Asheville Campus</p>	 <p>Meredith Niess, MD Clinical Academic Resource Director Charlotte Campus</p>	 <p>Laura Parente, MD Clinical Academic Resource Director Wilmington Campus</p>
 <p>Gita Fleischman, MD Clinical Academic Resource Director Raleigh Campus</p>	 <p>John Jenkins, MD Clinical Academic Resource Director Greensboro Campus</p>	 <p>Neva Howard, MD, MS Director of Learning Innovations</p>
 <p>Erin Bakal, MS, Ed.D Academic Specialist Raleigh Campus</p>	 <p>Meredith Hughes, MEd Director of Student Affairs Wilmington Campus</p>	 <p>Ebony Alston OAE Coordinator</p>

Office of Student Affairs and Advisory College

Office for Student Affairs
 ☎ 919-962-8335
 🌐 med.unc.edu/ome/studentaffairs
 🌐 med.unc.edu/md/governance/mistreatment

 <p>Georgette Dent, MD Associate Dean for Student Affairs</p>	 <p>Alice Chuang, MD Assistant Dean for Student Affairs</p>	 <p>Liz Steadman, PhD Director of Student Affairs</p>
---	---	---

 <p>Jonny Gerkin, MD Director of Student Wellness</p>	 <p>Kristy Borawski, MD COPE Committee chair</p>
---	--

Advisory College
 ✉ alice_chuang@med.unc.edu
Wellness Director
 ✉ Jonny_gerkin@med.unc.edu
COPE Chair
 ✉ Kristy_borawski@med.unc.edu

Clinical Counsellors and Other Resources

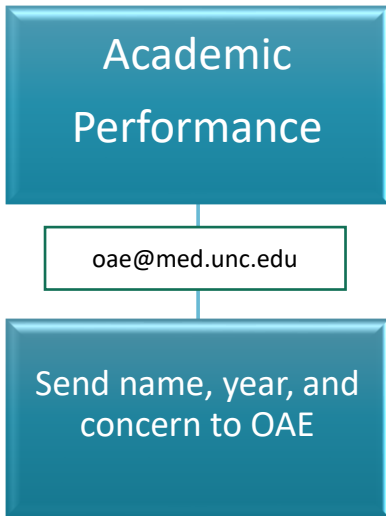
 <p>Amanda Hall LCSWA, LCASA Wellness Coach for MD and PhD students</p>	 <p>Christine Crowther MSW Wellness Coach For MD students</p>
--	--

CAPS
 🌐 Med.unc.edu/wellness
Office of Scholastic Equity and Enrichment
 🌐 med.unc.edu/inclusion/osee/

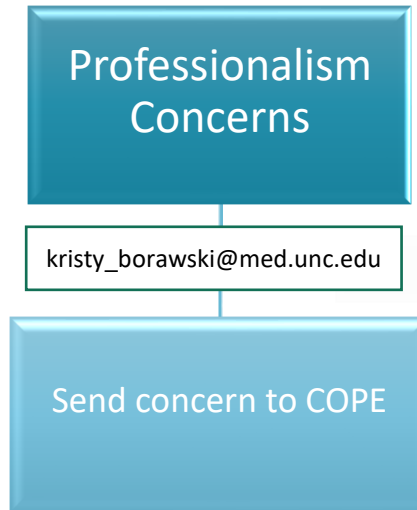


Faculty Guide to Student Support Services

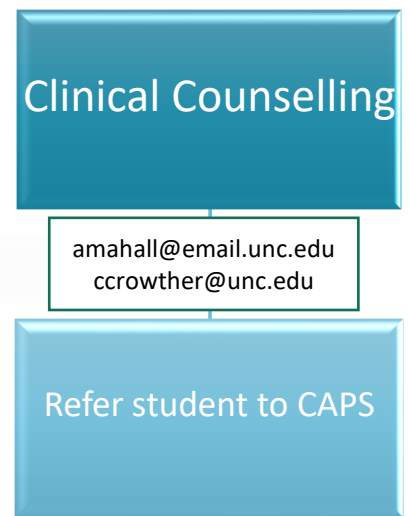
What to do when your student needs help



Workflow: Send your concern to oae@med.unc.edu. Your email will be triaged to the appropriate resource based on the student's year. You will receive email confirmation that we have received your request and are engaging the student. The OAE may reach out to you to discuss or gather more information. Students may or may not choose to meet with the OAE team.



Workflow: All professionalism issues should be sent to COPE kristy_borawski@med.unc.edu. You may be asked for more information to help guide the outreach.



Workflow: Refer the student to the CAPS website caps.unc.edu or encourage them to email Amanda or Christine. All services are FREE and do not depend on insurance status.