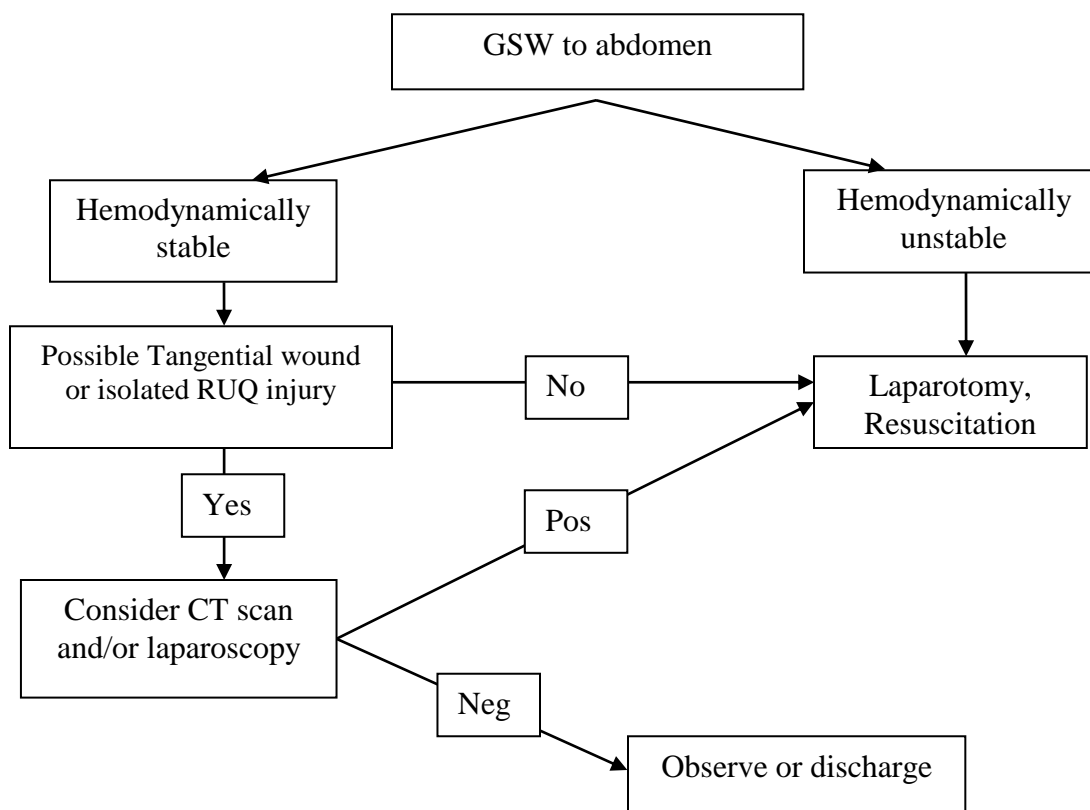
	Trauma Services	No. 4093
	Title: Penetrating Abdominal Back and Flank Injury- Shared	Page: 1 of 3
		Effective Date: 07/17/2020

**PURPOSE:**

The goal of evaluation is to identify patients requiring surgical intervention versus those who may be discharged directly from the emergency department.

Penetrating wounds that do NOT violate the peritoneum are treated as simple soft tissue wounds. Wounds that traverse the area posterior to the anterior axillary line without entering the abdomen are considered flank or back wounds.



**Origination date:** 01/31/1998


**Prepared by:** MGR, TRAUMA PROGRAM

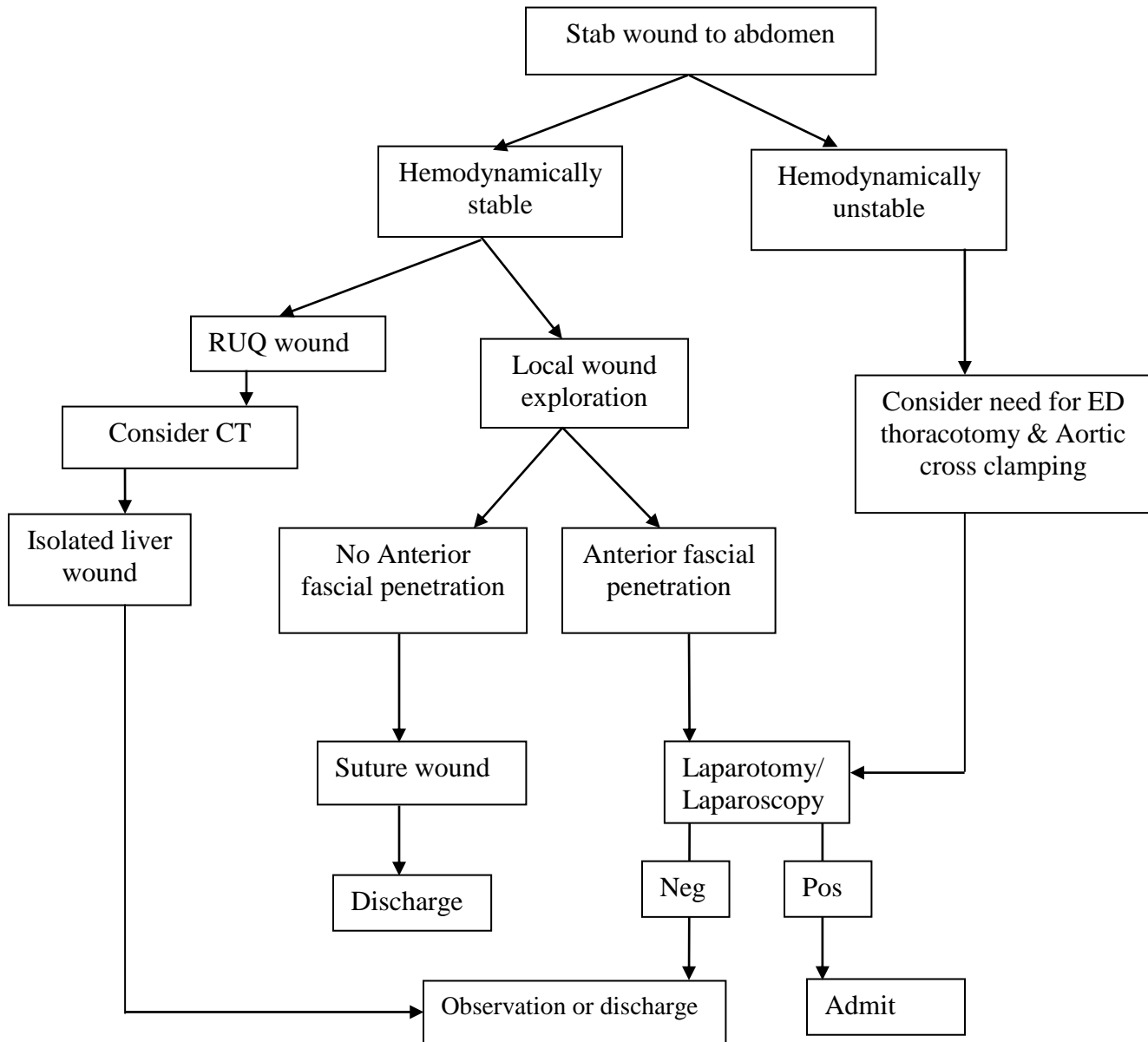
**Approved by:** MEDICAL DIR TRAUMA - CARY, MEDICAL DIR TRAUMA - RALEIGH

**Reviewed:** 07/17/2020

**Revised:** 07/17/2020

**Printed copies are for reference only. Please refer to the electronic copy for the latest version.**

	Trauma Services	No. 4093
	Title: <b>Penetrating Abdominal Back and Flank Injury- Shared</b>	Page: 2 of 3
		Effective Date: 07/17/2020



**I. ADDITIONAL RESOURCES**

- a. Como, John J. MD; et al., Practice management guidelines for selective nonoperative management of penetrating abdominal trauma, *The Journal of*


**Origination date:** 01/31/1998

**Prepared by:** MGR, TRAUMA PROGRAM

**Approved by:** MEDICAL DIR TRAUMA - CARY, MEDICAL DIR TRAUMA - RALEIGH

**Reviewed:** 07/17/2020

**Revised:** 07/17/2020

	Trauma Services	No. 4093
	Title: Penetrating Abdominal Back and Flank Injury- Shared	Page: 3 of 3 Effective Date: 07/17/2020

*Trauma: Injury, Infection, and Critical Care*: March 2010 - Volume 68 - Issue 3 -  
p 721-733 doi: 10.1097/TA.0b013e3181cf7d07

**Origination date:** 01/31/1998

**Prepared by:** MGR, TRAUMA PROGRAM

**Approved by:** MEDICAL DIR TRAUMA - CARY, MEDICAL DIR TRAUMA - RALEIGH

**Reviewed:** 07/17/2020

**Revised:** 07/17/2020

**Printed copies are for reference only. Please refer to the electronic copy for the latest version.**