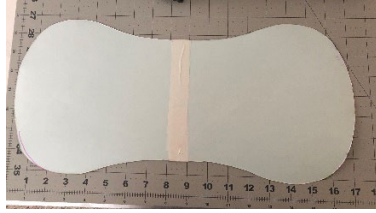


BURP CLOTHS

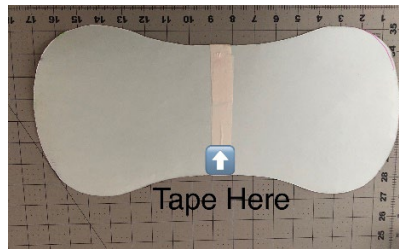
Size: each is 17" long and approximately 8" at the widest point



Fabric: flannel for the front and **terry cloth** for the back (any other fabric does not absorb liquids)

Template: The easiest thing to do is to cut 2 pieces of the template provided and tape them together.

Then you have 1 large pattern and can trace this easily on your fabric.



Sewing Directions:

1. Trace the template onto the flannel fabric.
2. Pin the terry cloth to the flannel (right sides together).
3. Sew around both pieces leaving approximately a 2 inch opening.
4. Trim close to the seam and then turn right sides out.
5. Press lightly with iron on the flannel side to crease the seams.
6. Topstitch around the entire burp cloth closing the opening. (Or you can hand sew the opening closed if you wish.)



When printing this template make sure your printer is in portrait mode to get the correct size.

